

# Thompson Dam Alternatives Analysis

Thompson Dam lies on a 7.6-acre parcel that is owned by the Wissahickon Valley Watershed Association (WVWA). The dam, located downstream of Cedarbrook Country Club and above Mt Pleasant Avenue in Whitpain Township, is regulated under Hazard Class C-3 by the Pennsylvania Department of Environmental Protection. In 2017, PADEP inspected the dam and found that it is in poor condition; and that the dam should be breached or properly repaired.



WVWA received grant funding for an assessment of a series of options on the future of the Thompson Dam and each option's impacts on the riparian corridor, the Green Ribbon Trail, and surrounding properties. The intent of the assessment is to inform WVWA's leadership on how to sustainably manage the dam and the surrounding riparian corridor and improve the management of ecological and recreational resources in the Wissahickon watershed.

## Dam Hazard Class C-3:

**Impoundment Storage:** <1,000 acre feet

**Dam height:** <40 feet

**Population at Risk:** None expected

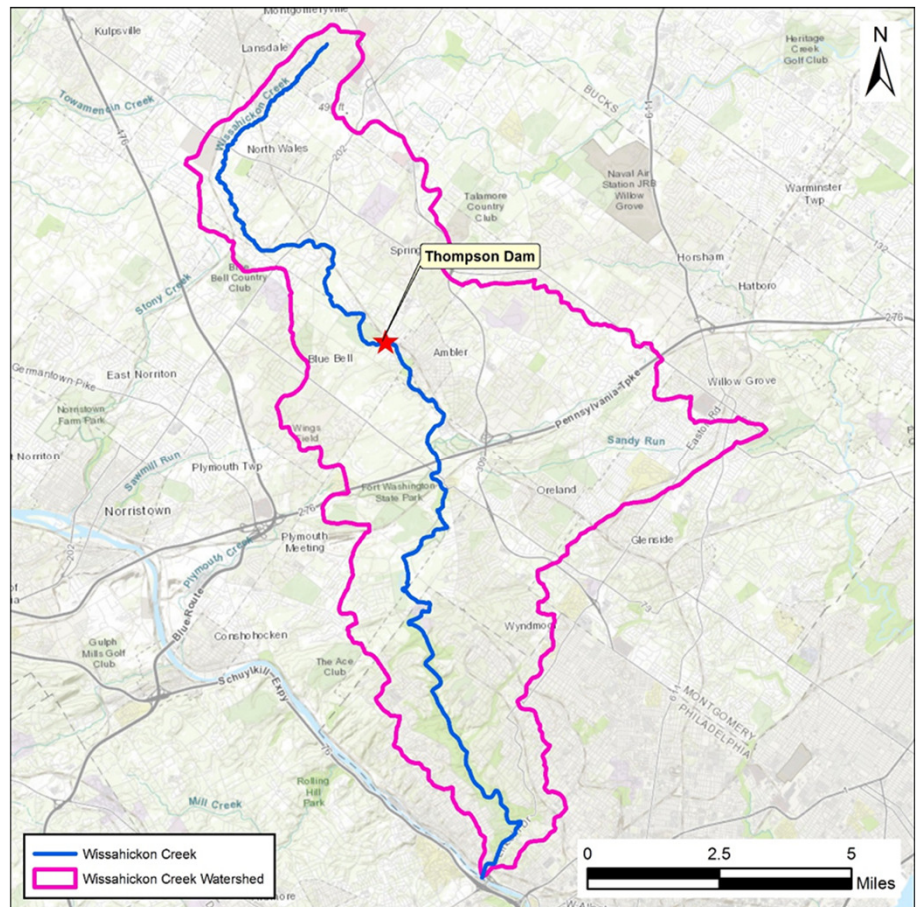
**Economic Loss:** Significant damage to property; Short duration public inconvenience (i.e. loss of stream crossing)

## Alternative Dam Management Options:

- No Action
- Dam Rehabilitation
- Partial Dam Breach
- Complete Dam Removal

## Impacts Considered for Each Alternative:

- Water quality
- Flow variability
- Riparian and aquatic habitat
- Wetlands
- Recreation
- Floodplain management
- Public safety
- Invasive species
- Operations and maintenance



WVWA is coordinating a process to assess the impact of each alternative and communicate findings to local stakeholders.